

WRECK OF A LIFE.

Close of Sara Althea Terry's Troubled Career.

SAD SEQUEL TO A SADDER HISTORY.

Her Troubles Drive Her Insane and, if Alive, Her Home Will be a Madhouse—
—Strange Vagaries of Her Disordered Brain—Telephonic Communication With the Other Shore—Her Sudden Disappearance From a Friend's House—
—A Fateful Law Suit.

SAN FRANCISCO, Feb. 15.—Sarah Althea Terry, who gained such notoriety by her divorce suit against ex-Senator Sharon and her subsequent marriage to Judge Terry, has become insane over spiritualism. She has been very eccentric ever since Terry was shot down by Officer Neagle at the Lathrop cutting station the moment after he slapped Justice Field's face. The fact that the court held Neagle blameless drove her nearly insane, and his feeling was aggravated by troubles which she had with her attorney in Fresno. She claimed that this attorney made love to her and she produced several attornay letters he had written. This enraged him, and when she called at his office to get her law papers he ejected her and the courts justified him in doing so.

Thought She Had Been Robbed.
Mrs. Terry about three months ago came to this city and bought some articles at dry goods stores. She claimed a few days later that her trunk had been robbed in a lodging-house where she hired a room, and she enumerated silks and satins worth \$7,000 that had disappeared. The case was thrown out of court and she was not heard from again until Thursday, when she came here from Stockton. She was placed by a friend in the house of Editor Culbreth, of the City Argus, and a nurse was hired to care for her, as she seemed to be laboring under tremendous excitement. Dr. Gilmore attended her and he says it is a clear case of dementia due to worry over her affairs and dabbling in spiritualism.

Gets Telephone Messages from Spirits.
She sits for hours in one place with a pocket handkerchief tied up and placed to her ear like the holder of a telephone. She says she gets all kinds of messages through this handkerchief from her friends in the spirit land, and she handed the handkerchief to a reporter who saw her ask him if he didn't hear whispers coming through it. She looks very old and haggard, and her pale face is flushed with fever. Her pulse runs high, but she seems insensible to heat or cold. At night Sarah becomes very violent and calls for Judge Terry and for Porter Ashe, whom she says she loves dearly, as his father was a bosom friend of Terry in early days.

The Wreck of a Fair Woman.
The poor woman is a physical and mental wreck, although she is not over forty years old. She had only a remnant of property left. Judge Terry's estate having been heavily mortgaged and badly managed. When the Sharon divorce suit began in March, 1884, she was a remarkably handsome woman, and since then she has been almost constantly before the public. She never got a cent from the Sharon estate, and about six months ago the last of her appeals was denied by the federal court. She was born in 1850 at Cape Girardeau, Mo., and in her youth was the most beautiful woman in the vicinity, but very eccentric and hot-tempered.

SHE ESCAPES AND DISAPPEARS.

Allowed to Go Out for a Moment She Cannot Be Found.

Mrs. Terry disappeared from Editor Culbreth's house at 7 o'clock yesterday morning and no clue has yet been secured to her whereabouts. The doctors dosed her Saturday night with opiates and she secured her first sleep for nearly four days. She looked better yesterday morning and surprised Culbreth early by appearing in full street costume and saying she wanted to walk on the sidewalk in front of the house. He was amazed when he reached the street to find her gone. An alarm was given and the neighborhood was thoroughly searched, but no trace of her could be found.

Fears That She Has Succeeded.

Mr. Culbreth is of the opinion that she has gone to the home of friends in Oakland, but there are some who think the poor woman may have thrown herself in the bay. Editor Culbreth is not sorry Sarah has left his house. He frankly admits he was going to have her put in charge of the authorities today, as she had worn him out and damaged his place by her eccentricities. The story of her wrecked mind and forlorn condition excited much pity here among those who knew her before she began the disastrous law suit against Sharon.

Was a Fatal Cause Celebré.

Her famous lawsuit against Senator Sharon, whose "common law" wife she claimed to be, and later against the Sharon estate, will be remembered. Nearly every one who played a conspicuous part in this famous case is dead or broken in fortune, due directly to some outgrowth of the case. Sharon died years before his time, owing to worry over the suit. Terry was shot through litigation over the case. General Barnes, Sharon's leading counsel, lost a fine practice because of his devotion to the suit, and his management of the case hurt his prestige.

Fate of Other Participants.

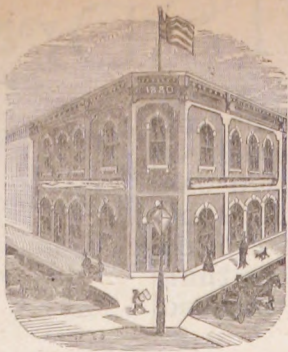
Sarah's leading counsel, Judge Tyler, was disbarred because of crooked work done in the trial. Several of the witnesses in the case were convicted of perjury and two were sent to San Quentin. Judge Sullivan, who delivered the decision granting Sarah alimony and half the Sharon estate, has tried twice to get on the supreme bench, but each time Sharon's influence has beaten him and he is now a practicing lawyer. Now Sarah herself winds up the procession a total wreck.

The Illinois-Iowa League.

CHICAGO, Feb. 15.—President McKee, of the Illinois-Iowa league, has been doing missionary work in Peoria, Springfield and Jacksonville, and is confident that those cities will enter the league. The towns now considered certain are Rockford, Quincy and Joliet and the three named above. Strong pressure is being brought to bear on Burlington and Aurora, and it is expected that they will fall into line, thus forming an ideal minor league circuit.

Proposal to Increase the Whisky Tax.

WASHINGTON, Feb. 15.—In order to make up any deficiency caused by the passage of a free wool bill—which is also to reduce the duties on manufactured woolen goods—Springer proposes to increase the tax on whisky, perhaps, 20 cents per gallon.



Mickelson's Block, (Corner East and Franklin Streets.)

This elegant business block is occupied by some of our enterprising business men, including E. T. MILLER, Dry Goods; LIGGITT & FENN, Groceries; MRS. W. E. FENN, Handsome Millinery Parlors; KETCHAM & SMITH, Real Estate, Loan and Insurance Office up Stairs; DWIGHT ART CO.; DR. PAYNE, Dentist. It will also be noticed that the STAR AND HERALD NEWSBOY is selling the DAILY near the lamp post on the corner.

J. SCHOTT,
Merchant Tailor,
HAS CONSTANTLY ON HAND A
FINE LOT OF SAMPLES
OF SPRING GOODS FOR SUITS,
PANTS, ETC.
PRICES REASONABLE.

Cleaning and Repairing
A SPECIALTY.
GIVE A FAIR TRIAL.
East Street, DWIGHT, ILL.

JACOBSEN & SMITH,
Will be found hereafter in their new quarters
in Mrs. Koehnlien's building on Mazon
Avenue. A fine line of

Cigars,
and Tobacco,

Temperance Drinks of every
every kind, Fruits, Candies,
Fresh Country Buttermilk,
Beef Tea, Lemonade, Etc.

Call and See Us While in the City.

Dr. C. H. Barr, **W. S. LOWER,**

Carries a full line of

Pure Drugs. ELECTRICIAN

A large assortment
of Elegant

Perfumes

—AND—

TOILET WATERS.

Anything in the

CIGAR

line, from Stogies to Key-West
and Imported Goods.

**Hair, Cloth, Flesh, Bath,
Nail and Tooth
Brushes.**

Next Door to Post Office,
DWIGHT, ILL.

W. S. LOWER,

ELECTRICIAN

WIRING FOR

Incandescent Light,

Electric Bells,

Annunciators,

Speaking Tubes.

DWIGHT, ILL.

Address:—Pennsylvania House.

W. H. KETCHAM,
ATTORNEY AT LAW.

FRANK L. SMITH,
NOTARY PUBLIC.

There is no Hurrah Boom on, but one of Health and Growth.

Every Financier looks out for himself and family.
Own your home and laugh at the landlord.

Ketcham & Smith,
The Leading Real Estate Dealers

Presents you with a rare list of City and Farm Property:

Town Property for Sale.

- Two lots and house, corner property, south front, very nice, \$1,300.
- New 15 room house, 75 ft. south front new property; a rare bargain.
- House and 70 ft. frontage on Franklin street, a good business location, \$2,500.
- One acre of ground with good house and improvements, facing Chippewa street, \$2,250.
- Five lots in west part of town, \$350.
- Six lots this side East school house on Mazon Ave., and Seminole street, \$1,000.
- Two lots, fine shade, south front, good location, \$750.
- Thirty-four ft. on East street with buildings, \$9,000.
- House and one lot on Mazon Ave., close to business, \$1,300.
- One and one-third acres of ground just west of Brick school house, \$1,200.
- Two lots on Delaware st., a bargain, \$600.
- Three lots on Delaware st., corner property, \$1,500.
- House and three lots well improved, corner, in fine location, \$4,000.
- House and two lots on Chippewa st., a bargain to anyone at \$1,500.
- Eight lots, will divide, corner Chicago and James st., fine, \$2,500; inducements to purchasers.
- House and lot on Delaware st., half block from business center \$2,200.
- A fine business corner, 114 ft. frontage on Franklin st., room for four fronts, \$3,500.
- Fine new modern house in fine location for \$4,000.
- Two lots on North st., facing the Park, \$700.
- An opportunity for an investment that will pay 15 per cent. a business house and lot, \$2,000.
- Twenty-five feet on Mazon Ave., the best business location in the way of vacant property in town. Investigate at once, \$2,100.
- Two lots on Seminole street, \$3,000.
- House and two lots, corner North and Clinton streets, \$1,700.

- New modern house and one and a half lots on Mazon Ave., right in town, \$6,000.
- A fine modern house, that cost the money alone, and 2 lots, \$6,500.
- House and three lots near Hahn's farm, \$1,000.
- House and two lots on Seminole st., 13 rooms, new, will pay for itself in two years, \$3,750.
- One and a half lots on Delaware st., \$300, or one lot for \$350.
- House and one lot on Delaware st., corner property, \$1,000.
- House and two lots on Waupansie street, \$2,600.
- House and lot on Delaware st., close to business, \$2,600.
- Two very fine corner lots on Seminole street, \$1,300.
- Two very fine lots close to Franklin street, \$550.
- Three fine lots on Renfrew Ave., \$750.
- One and a half lots with front in fine locality, \$500.
- One lot on Delaware street \$250.
- House and 4 lots on Seminole street, \$1,250.
- House and lot on Delaware street, not far from new club site, \$3,000.
- House and two lots on South street, \$2,500.
- A fine house, five lots, fine improvements, shade, etc., \$6,000.
- Barn and five lots in Odell, will divide, \$1,500.
- Good dairy business for sale.
- House and lot on Seminole street, nice location, well improved \$2,000.
- Fine new house with three and a half lots, a bargain at \$3,600. Will sell with less ground.
- House and lot on Chippewa street, good property, \$2,100.
- One lot on Seminole street, \$500.
- Block of 14 lots in southeast part of town, \$2,100; will divide.

We have opportunities in the investment.
If anyone's property is not shown in the list it is for want of space.

Farm Property for Sale.

Eighty acres of land in Murray county Minn., \$1,000.
Eighty acres of land in Pipestone county, Minn., \$1,000.
Eighty acres four and a half miles south of Dwight, a fine eighty at \$600 an acre.

A fine eight hundred acre stock farm, the finest in Central Illinois; 885 a acre. Lands in Arkansas, Kentucky, Southern Illinois and Minnesota for sale or trade. Three thousand acres of timber and coal land in Kentucky. One hundred and sixty acres three and a half miles southwest of Odell, tiled, etc. at \$60 per acre. One hundred and sixty acres, fine tiled farm, with good improvements; \$50 per acre. 315 acres, white oak, popular and hickory, timbered land in Williamson county, Ill., 5 miles from R. R. Price \$10 per acre. Cut from 3 to 5 thousand feet per acre. 80 acres, cut from 5 to 8 thousand feet per acre, 7 miles from R. R. in Williamson county, Ill.; price \$15 per acre. 160 acres 1 1/2 miles west of Gardner, a fine farm. Space will not admit an outline of improvements. \$62 per acre. Five miles from Gardner and seven from Dwight, a fine quarter section at \$60 per acre. 100 acres four miles south and two miles east of Dwight, \$55 per acre. 80 acres 5 miles northwest of Dwight; a fine farm, well improved, all kinds of fruit, and tiled, \$68 per acre. 160 acres five miles east of Dwight, fair improvements, \$55 per acre. 3 miles from Reddick, a fine 160 acre well improved, \$62.50. 2 1/2 miles west of Dwight; fine 160 acres at \$75 per acre. Eighty acres, 3 1/2 miles from Dwight, improved as follows: 1 1/2 story house twenty-eight by twenty-four and kitchen in good shape, all kinds of fruit, good barn, buggy shed, granary, crib, flowing well and tiled complete, \$7,500. 160 acres, 3 miles west of Dwight, well improved, worth the money; any one wishing a good farm of 160 acres will do well to investigate; \$70 per acre. One hundred and sixty acres, 4 miles south from Dwight, a well improved farm, needs only to be seen to be convinced that it is a bargain, ten thousand dollars. We have located in the German settlement a fine farm of two hundred acres, four miles from Dwight. Two good houses, one which contains 9 rooms, fine shade, 3 good wells, one 404 feet deep that will never fail. All fenced and middle fenced. Fine shades, milk cooler, new, and a fine barn 92x53, crops never fail. Investigation will prove the above a bargain at \$70 per acre.

Insurance in Old Line Board Companies.

Collections, Loans and Abstract Titles Furnished.



Star and Herald and Banner of Gold,
ONE YEAR, \$2.50.