

Dwight Star and Herald.

VOLUME XLVII

LIVINGSTON COUNTY, ILLINOIS, APRIL 27, 1912

NUMBER 17

SILVERWARE WATCHES DIAMONDS

SPRING IS HERE
SO ARE WE

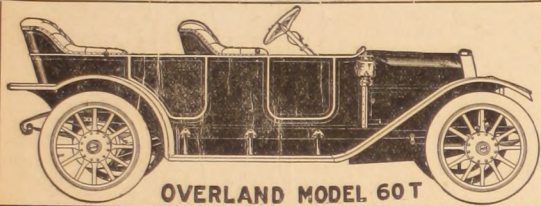
With a new and artistic line of spring goods to suit both old and young.

The new Coat Chain is a dandy also the new Neck Chain and Locket. We invite your inspection.

W. D. ROEDER

DWIGHT C. & A. Watch Inspector ILLINOIS

"OVERLAND"



OVERLAND MODEL 60T

Don't fail to see the "Overland" line before buying a car.

Model 59-T, 30 h. p., 5 passenger.... \$ 900.00
Model 60-T, 35 h. p., 5 passenger.... \$1200.00
Model 61-T, 45 h. p., 5 passenger.... \$1500.00

CALL OR WRITE

FRED G. ZWEIFEL

ODELL ILLINOIS

BIG TORNADO SWEEPS VICINITY

Three Killed and Big Property Loss is the Result of the Storm That Swept Within a Distance of Two Miles of Our City Sunday Afternoon

Dwight was fortunate in escaping the terrible storm that swept this portion of the country for a hundred miles north and south of this city Sunday afternoon between 4:30 and 5:00 o'clock.

The rain fell in torrents and the hail was the biggest that has fallen around here for some time, yet there was very little damage done in town. Inquiry in various townships shows that the storm covered a large area

leaving nothing but the foundation and across from the school house, on the old Tanner farm considerable damage was done. The barn was destroyed, killing one cow; also the crib and house were unroofed, and a number of trees were uprooted.

From there the storm swept a clean path through the fields, leaving the ground as bare as if swept by a gigantic broom, until it came to the farm where Thomas Kelly lives, one



A picture of the Sorensen farm where Andrew Anderson lives. All of the buildings being partially destroyed, leaving a mass of ruins on the farm.

but instead of being a cyclone the disturbance was in the nature of numerous tornadoes, covering areas of from a quarter to one-half mile in extent.

It was these which caused a considerable amount of damage in various localities. The first effects of the storm is said to have been half way between here and Odell, where the heavy wind blew telegraph and telephone poles down and cut off all communication south. From here the

mile south and two miles east of here, where the barn was destroyed, killing one horse. The windmill also was blown down.

On the farm where Art Smith lives the barn was completely destroyed.

On the Sorensen farm, where Andrew Anderson lives, the house was unroofed and the barn, corner crib and other buildings were demolished. The windmill was also blown down. Two horses that were out in the storm



Site of the farm of L. P. Reimer on the Kern farm, two miles south and one-half mile west of here, which was completely demolished, leaving buildings and household goods scattered across the field.

storm can be easily traced northeastward through the country and across the state into Indiana, where the entire town of Morocco is said to have been demolished and a number of persons killed.

The farm buildings where L. P. Reimer lived, two miles south and one-half mile west of here, were completely demolished, leaving nothing but the foundation of the house, the rest of the building and household

were blown down the field for fifty feet, one being quite severely cut by barbed-wire.

The roof was taken from the barn and corner crib on the farm where Moss Anderson lives.

At the farm of Ben Kelly the entire set of buildings was wrecked. An organ was blown from the house and nothing could be found of it. Mr. Kelly was sick and was in bed in a small bed room off from the kitchen



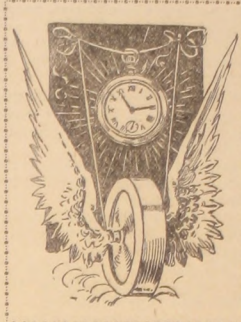
View of the site of the school house two miles south of town which was completely sucked up by the wind, leaving nothing but a few boards scattered across the field.

goods being scattered through the fields. Mr. and Mrs. Reimer happened to be away visiting that afternoon and can consider themselves lucky as the chances are they never would have gotten out alive.

The school house two miles south of here was also completely demolished,

at the time of the storm, but was not touched, it being the only room in the house that was not damaged. The horses were all buried in the barn, but were later taken out, only two being hurt.

The school house two miles south of here was also completely demolished,



TIME FLIES

We are always up to the times. Our new spring stock has never been surpassed in Dwight.

Look over our goods for wedding and anniversary presents.

Practical Watch Repairing

EVERETT B. LEWIS

JEWELER AND SILVERSMITH

East Street

Dwight, Ill.

Wonder of the Cream Separator World



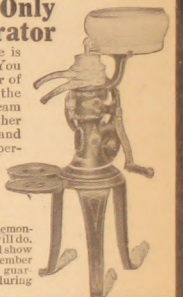
Unquestionably the most marvelous invention ever made in cream separators is the splendid skimming device, consisting of only one piece. It separates the cream from the milk better than any skimming device ever known. The National Cream Separator, made in all sizes, is equipped exclusively with the one-piece skimmer.

The Vortespoon One-Piece Skimming Device

All skimming is done with the one piece pictured here. This splendid piece of mechanism is made of specially selected German nickel steel. Simply impossible to get out of order. Just think of what this means to a cream separator. Instead of the myriads of discs, floats, beaters and other "trouble makers" which are put into the ordinary cream separators, you have only this one piece to deal with. You have only this one piece to clean. Instead of requiring half an hour to do the work, any woman can clean this piece in two to five minutes.

The Vortespoon Found Only in the "National" Separator

The Vortespoon One-Piece Skimming Device is found only in the National Cream Separator. You should not think of buying a cream separator of any make until you first see and investigate the National. It is unquestionably the leading cream separator in America. It has beaten all other cream separators of all makes in hundreds and hundreds of tests. The National is made as perfectly as it is possible to make a separator. Every detail has been attended to with the utmost care. The highest grade steel is used throughout. You cannot appreciate what the National is until you come in and see it. It is standing on our floor and we will give you a demonstration of just what the National Cream Separator will do. Just let us take a National to your farm some day and show you what it means to skim with this machine. Remember this—the National is backed with an unconditional guarantee. This guarantee stands back of the National during its entire life. Don't put it off—come in today.

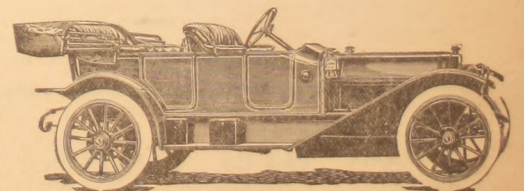


For sale by **Eugene Flagler**

Your Office Stationery

DOES IT NEED REPLENISHING? DON'T YOU WANT SOMETHING NEW? CALL AT THE DWIGHT STAR AND HERALD OFFICE AND SEE OUR VARIOUS SAMPLES OF STOCK AND ARTISTIC PRINTING.

Mitchell



4 Cylinder, 5 Passenger, 30 h. p. 1150
6 Cylinder, 5 Passenger, 40 h. p. 1750
WITH FULL EQUIPMENT

Cylinders 3 3/4 inches diameter, 5 1/2 (long) stroke. The long stroke motor gives you the power. If you buy a short stroke motor, you are buying a "back number."

All Mitchell Models Have Full Floating Rear Axles

1912 MODELS ARE NOW ON EXHIBITION

One Second Hand 1910 Model, 30 H. P.—FOR SALE

Dwight Automobile Co.

The First National Bank of Dwight

UNITED STATES DEPOSITORY
THE OLDEST INCORPORATED
THE GREATEST IN RESOURCES

Our Financial Statement

The growth of this bank is the best evidence that its policy and methods are in accord with the demands of present day business needs.

We ask you to look over the financial report we publish today and note the growth and well balanced financial standing of this bank.

We are at all times prepared to discuss your requirements with you and please our services at your disposal.

3 PER CENT INTEREST ON SAVINGS
SAFETY DEPOSIT BOXES FOR RENT

FRANK L. SMITH, President CURTIS J. JUDD, Vice Pres't
JOHN J. DOHERTY, Cashier JOHN E. OUGHTON, Vice Pres't
E. M. KOPPEMAN, Assistant Cashier

Directors

CURTIS J. JUDD JOE MILLER WILLIAM WYLLIE
FRANK L. SMITH E. H. MILLS
C. J. AHEARN E. B. LEWIS

goods being scattered through the fields. Mr. and Mrs. Reimer happened to be away visiting that afternoon and can consider themselves lucky as the chances are they never would have gotten out alive.

The school house two miles south of here was also completely demolished,

(Continued on Page 7)