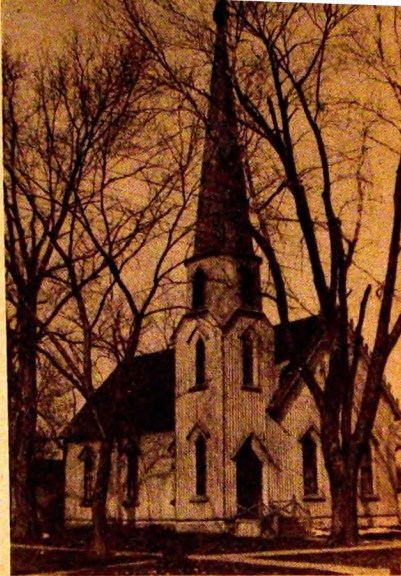
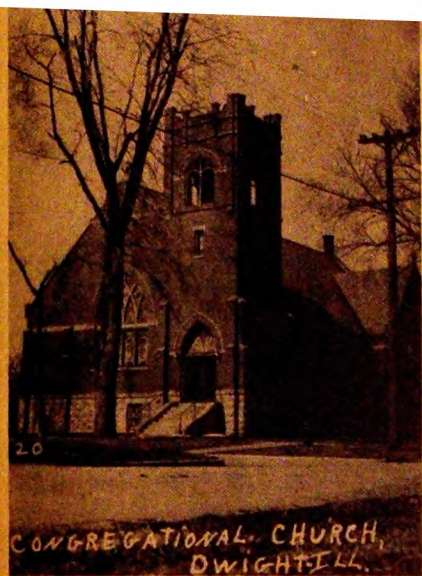


CATHOLIC - CHURCH,  
DWIGHT, ILL

A LOOK AT DWIGHT'S CHURCHES — These pictures reveal three of Dwight's churches as they looked several years ago. On the left is the former St. Patrick's Catholic Church which was torn down in 1970. The



other two are the Pioneer Gothic Church [in middle] and the First Congregational Church [at right] which are still standing.



CONGREGATIONAL CHURCH,  
DWIGHT, ILL.