

SALEM EVANGELICAL CHURCH
Goodfarm, Illinois

DEDICATION SERVICES

NOVEMBER 26-29, 1925

K. J. BAUERLE, Pastor
J. C. SCHAEFER, Presiding Elder



DR. WILLIAM E. GROTE

New President of Eastern Theological School



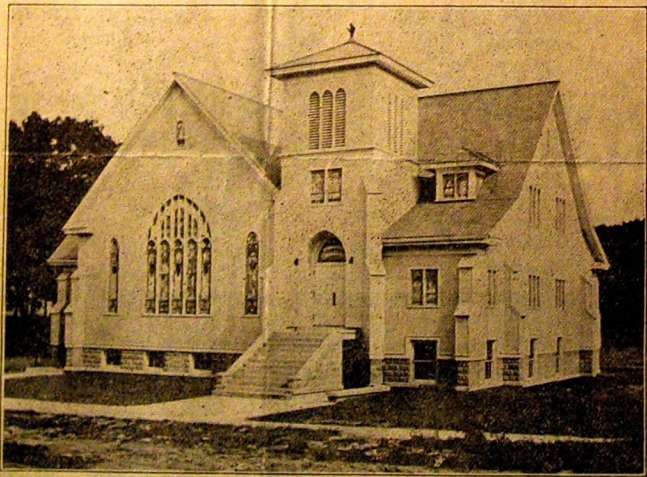
BISHOP J. S. STAMM

The church will receive with much satisfaction and approval the announcement that our senior bishop, John S. Stamm, has been elected as president of the Evangelical School of Theology, located in Reading, Pennsylvania. This position was vacated by the death of Bishop S. C. Breyfogel, who for many years had fostered the school and guarded its interests. Bishop Stamm comes to this new position of responsibility with high qualifications. Before his election to the episcopacy he occupied the chair of Systematic Theology, in the Evangelical Theological Seminary, of Naperville. In addition to that he brings the further qualification of an intimate knowledge of the church and her needs his travels and contacts as bishop have brought him. Under his presidency the finest traditions and best interests of the seminary will be preserved.

CHURCH DEDICATION IN BONFIELD, ILLINOIS.

Sunday, Sept. 1st will be long remembered by the friends and members of the Salina congregation of the Grand Prairie Circuit, when our newly erected church at Bonfield was dedicated to God's service by Mr. H. J. Kiekhoefer of Freeport, Ill. In the largely attended services Bro. K.

with a basement under the entire building, heated by two large furnaces and electrically lighted by its own plant. The building is furnished with all the modern conveniences. The auditorium has an incline floor and will seat 275 people. In the rear of the auditorium there are three S. S. rooms and a mothers' room, shut off from the main room by folding doors. The gallery has three S. S. rooms. All of the



BONFIELD CHURCH, ILL.

preached the Word with power, and the presence of the Holy Spirit was keenly felt. At the close of the morning service the pastor reported that if the church be dedicated free, \$400 more was needed. When an appeal was made, several hundred dollars over the required sum was secured in cash and pledges. This congregation now has a property valued at \$20,000. The building is a frame structure, 67 by 54, and 12 feet to the roof. It has three entrances

rooms above and below the gallery can be opened to full view of the pulpit, making the seating capacity about 500. The windows are of beautiful art glass inlaid with Bible scenes. To the rear of the pulpit is a library and secretary room. This church is located in a large and promising field. May this new temple of worship newly inspire its worshippers and become the center of wholesome influence for this entire community.

E. G. VAUBEL.