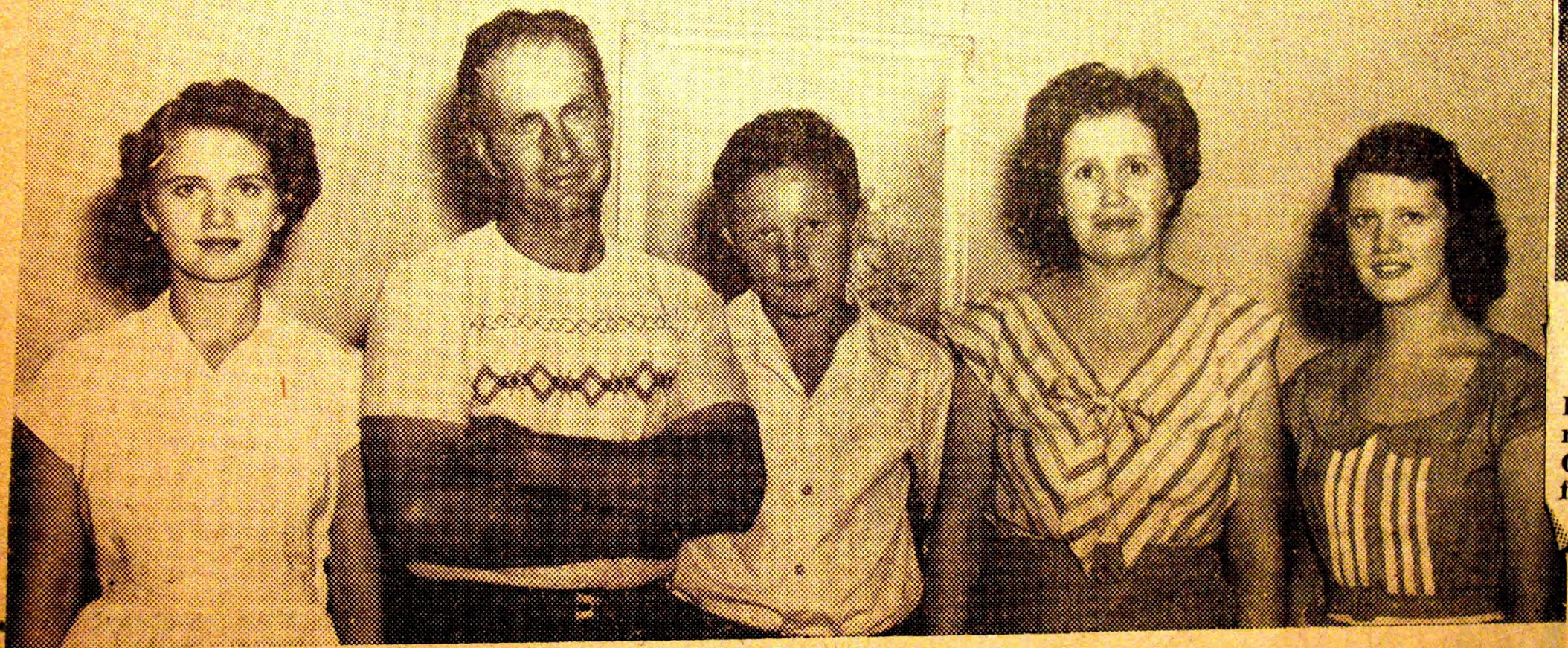


Front Row, left to right—Bill Steichen, Ove Strandskov, John Drew, Jack Lower, Rhody McCutcheon,
 Glen Bloxam, Coach Marvin Potthoff.
 Middle Row, left to right—Richard Burns, Trainer; Richard Mathiesen, Donald Oelschlager, Earl Krug,
 Donald Hosier, Willis Bilsborough; Harold Jensen, Trainer.
 Back Row—left to right—Richard Steichen, George Steichen, Donald Struebing, George Roessler, Robert
 Weller.



M
 Tuesday evening
 Dorothea Von Q
 near Reddick, be
 Church of Dwigh
 farm near Reddic

The Harold Morse family were the tenants of last week's Mystery Farm, a weekly feature in the Star and Herald. Pictured above are June, Mr. Morse, Harold Jr., Mrs. Morse and Jeannine. The fifth Mystery Farm is a McWilliams Farm, located four and one-half miles west of Dwight on Route 17. The Morses have farmed the 240 acre plot for the past seven years and prior to that had lived on a farm near Dwight. Like most farms, in these parts, grain is the chief product, but Mr. Morse has one of the largest dairy herds in Livingston County also. Nearly every month he ranks high in the Livingston County Dairy Association.