

overlooks the windshield wiper, tire checking, water, battery, etc. If you want the best of service stop at this popular station regularly.

will buy. You can also get fresh feed made while you wait here. Come in and ask for their free formula sheet and see how little it costs to have your feed made at this mill.

a farmer himself for 27 years) his business acumen and the ability to sell his goods, plus a social, congenial nature, has brought him many friends and patrons.

candies in box and bulk, cigars, cigarettes, tobacco, etc. He served on the Mexican border in World War I, and his son is now serving in the U. S. Air Corps. Mrs. Migliarini assists him at the store.

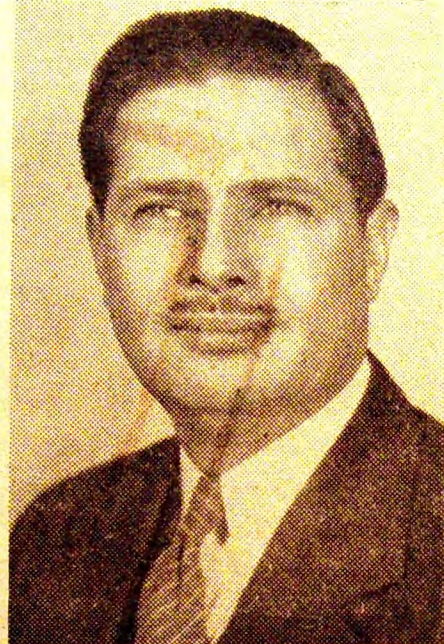


HAROLD F. LEWIS



MRS. MILTON BEYER

Mrs. Milton Beyer, known to her many friends and associates as "Nickie," owns and operates the Dinah Cafe at the northeast corner of East St. The Dinah Cafe is operated with the determination to furnish the people of this vicinity with choice meals and lunches at reasonable cost, and you may rest assured that when you eat at the Dinah you get the best food obtainable, prepared by people who know their business, plus service that is of the very best. Stop in at the Dinah sometime for dinner, or just a snack between meals—You are sure to be satisfied.



MILTON BEYER

Milton Beyer is proprietor of the tavern which bears his name on West Street. His establishment has the reputation of being a place where people can gather and meet their friends to spend an enjoyable afternoon and evening. His tavern is well equipped and operated in a most satisfactory manner in order to meet the demands and expectations of his patrons so necessary in this day of onward progress.

Mr. Beyer has Schlitz Beer on draught and carries all popular brands of bottled beer, and the choicest wines and liquors obtainable.



MARGARET NIELSEN CHRIS NIELSEN

Margaret and Chris Nielsen are the proprietors of Chris' Tavern, located on South Franklin St., Dwight, Ill. Their place of business is popular with the people of this and surrounding community. They operate an establishment where you can take your friends with the assurance that you will receive every attention, as they conduct this place in a manner that is sure to meet with your approval. Both possess a personality that makes warm friends and steady patrons of persons who otherwise would remain just casual acquaintances.



S. O. "Hap" Nelson, proprietor of the Nelson Farm Equipment Co., and his family moved their household goods to the farm which Mr. Nelson purchased south of town last spring.