

OLD ELEVATOR THAT STOOD EAST OF ALTON TRACKS AND IN FRONT OF WHERE THE M. & M. STORE IS NOW LOCATED

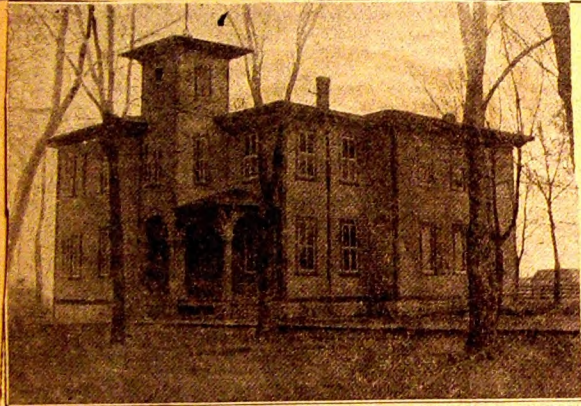
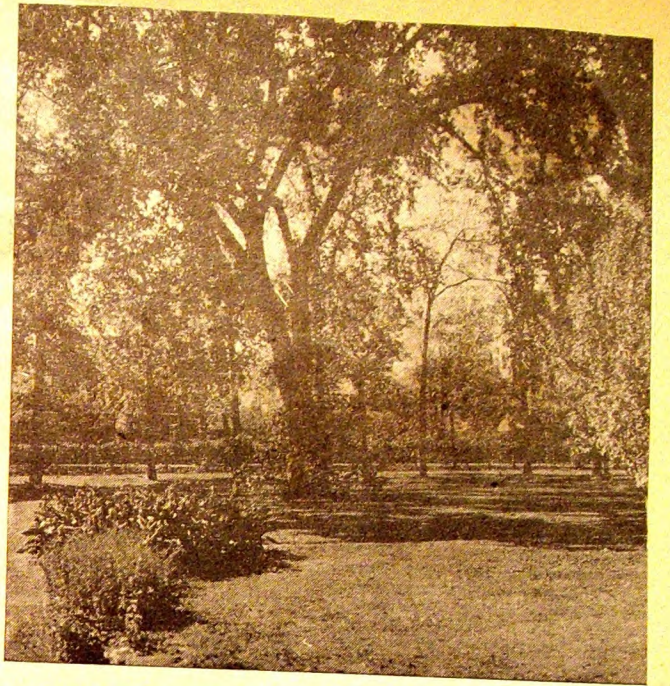
Tree Planted by English Prince in 1860 Stands On Oughton Property

This famous American Elm tree, which stands in the southwest corner of the lawn on the late Mrs. John R. Oughton property, was planted by the Prince of Wales in 1860, who afterwards became King Edward VII, of England.

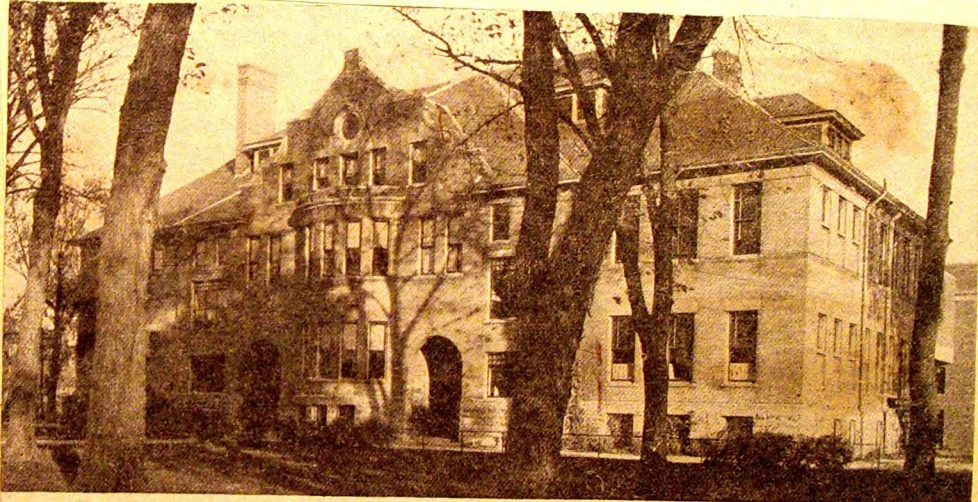
The tree-planting took place while the Prince, then but 19 years old, was on a hunting trip in this locality, while making a tour of Canada and the United States, and made a five-day stop in Dwight, September 22-26, 1860.

The tree, highly prized by the Oughton family, was but a slender sapling when planted; now it towers into the heavens, with wide-spreading branches for grateful shade.

The Prince while here also planted a tree on the Spencer farm, northeast of Dwight, the farm now belonging to the John P. McWilliams estate. This tree later died, but for many years was a prized possession of the farm owners. The farm was christened "Renfrew Lodge" by the Prince of Wales and has been known by that name ever since.



OLD EAST SIDE SCHOOL HOUSE

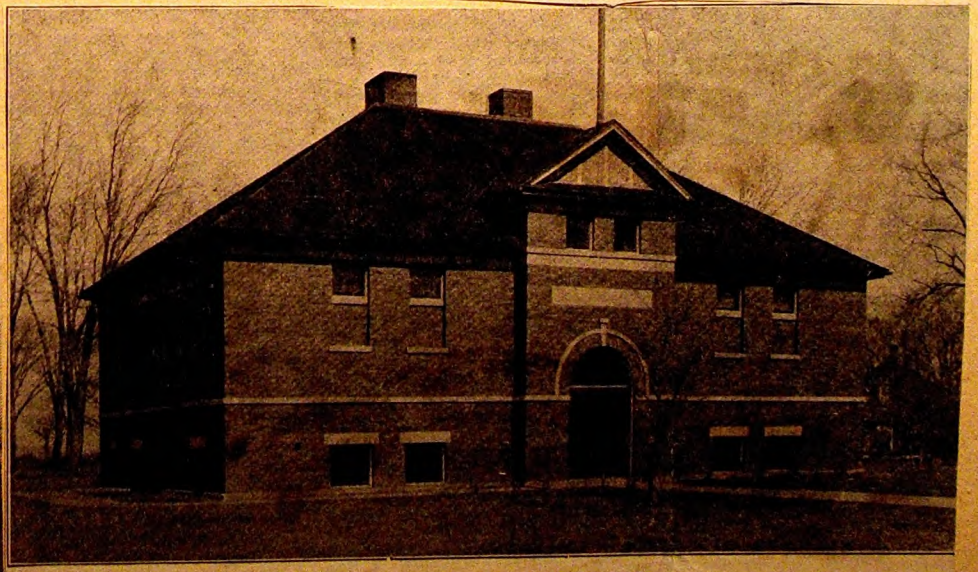


HIGH SCHOOL BUILDING



OLD WEST SIDE SCHOOL HOUSE

POLICE VILLAGE OF DWIGHT



WEST SIDE SCHOOL BUILDING



ARTHUR SMITH

ALPHONSE RICOLO

Elm
fr
D
y
h
S
T
e
n
g
J
O
R
e
v
o
M
a
H
s
w
t