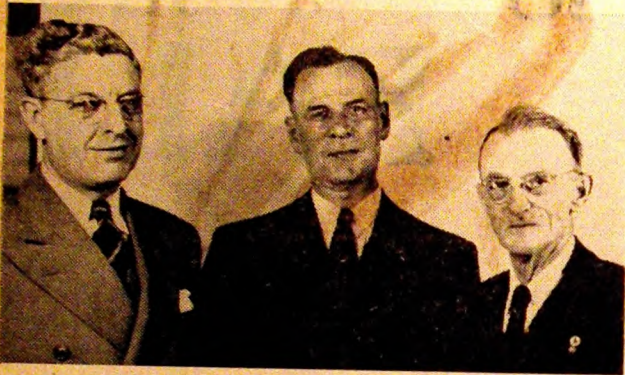


R. A. McClelland Elevator

Philip Ricolo, Jr. Roy Reeb Charles "Jack" Reeb
Jackie Averwig

Ralph H. Spreng told the
city Legionnaires about his
experiences in China at the
meeting held here Nov.

ELECTIVE OFFICIALS DWIGHT TOWNSHIP



Left to Right—Harold J. West, Supervisor; James Metta, Clerk;
L. Burton Orr, Justice of the Peace

Group of Local Boys Working on Corn in Nearby Field



Picture shows a group of forty-one High School boys in August who worked for four weeks detassling Pioneer Hybrid seed corn fields in this vicinity. The picture was taken at one of the fields on the Joe Burger farm, owned by Edw. McWilliams, located just east of town. The group was under the supervision of Mr. Carl Linn, Mr. Joe Cassidy of Princeton, Ill., and also Mr. Fred Van Dyke, Agriculture teacher of the Dwight High School. All was under the direction of Mr. Harold Kelly, sales supervisor for this corn in this territory.



Left to Right—L. G. Smith, Justice of the Peace; Clifford Steichen, Road
Commissioner; Edw. C. Dickler, Assessor.

DWIGHT COUNTRY CLUB HOUSE



Formally opened to the membership on September 22, 1924. The building is situated on a knoll near the creek and faces the north. There is a large main room which has a fireplace on the east side. Along the entire south side is an enclosed porch which opens from the main room. The Dwight Country Club was organized approximately twenty-five years ago, and from a small organization has grown to a large substantial membership. The attractive grounds afford many pleasant hours for the devotees of golf, during the summer months, and many social activities have taken place at the club house during past years, well as tournaments, both local and inter-city, on the golf grounds. Hans P. Rosendall is the President this year of the Club.



SCHOOL TRUSTEES

Left to Right—Fred Christensen, Robert Fieldman, Donald Christman.
Other Township Officials not present in pictures—Frank Weber, Com-
missioner; Frank L. Smith, School Treasurer; Sam Rhode, Thistle Com-
missioner.



SOUTH END OF EAST STREET IN 1870