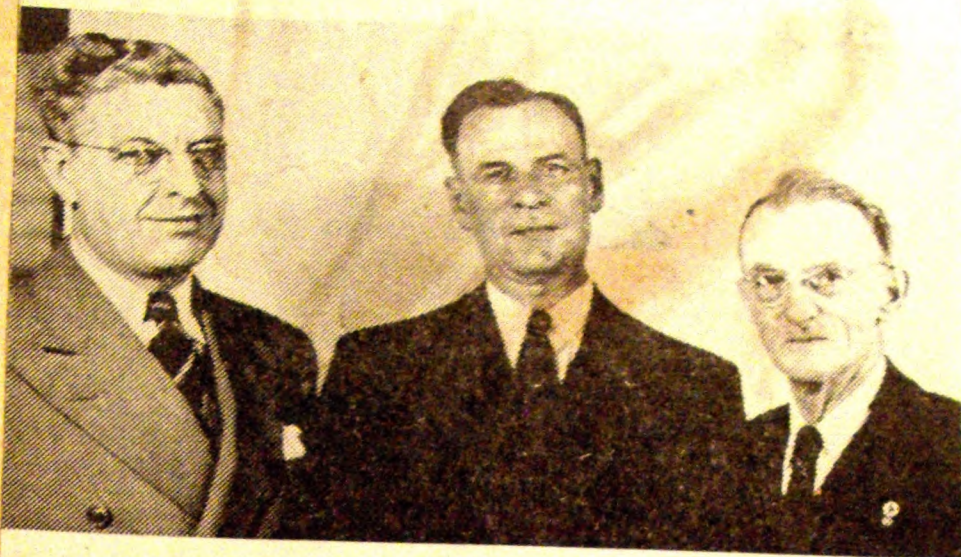


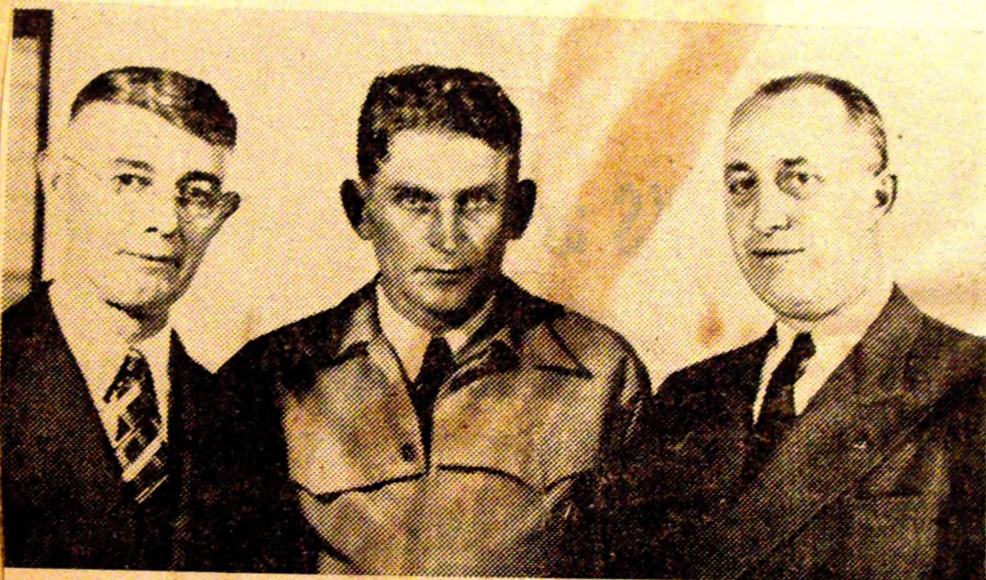
R. A. McClelland Elevator

Philip Ricol

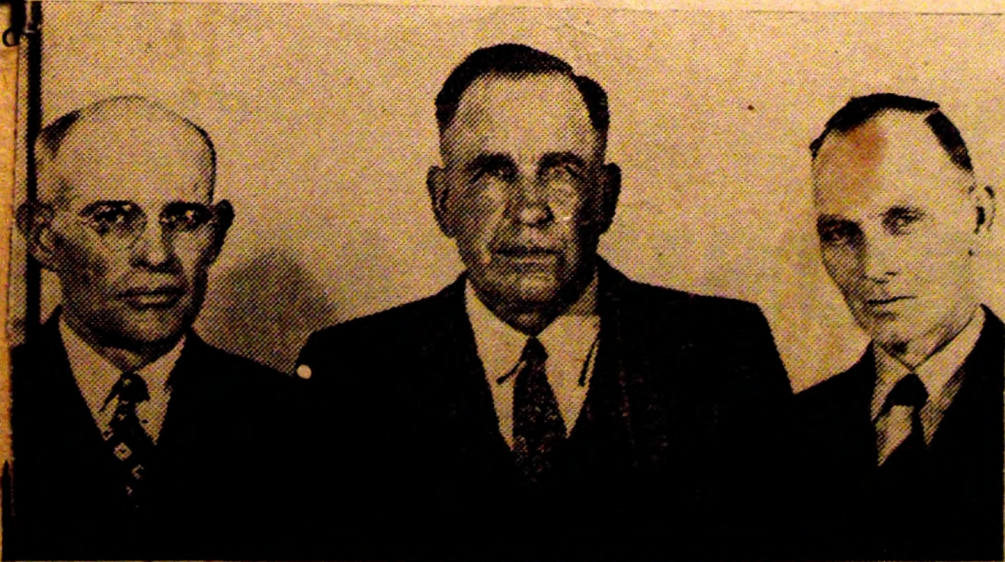
ELECTIVE OFFICIALS DWIGHT TOWNSHIP



Left to Right—Harold J. West, Supervisor; James Metta, Clerk; L. Burton Orr, Justice of the Peace



Left to Right—L. G. Smith, Justice of the Peace; Clifford Steichen, Road Commissioner; Edw. C. Dickler, Assessor.



SCHOOL TRUSTEES

Left to Right—Fred Christensen, Robert Fieldman, Donald Christman.

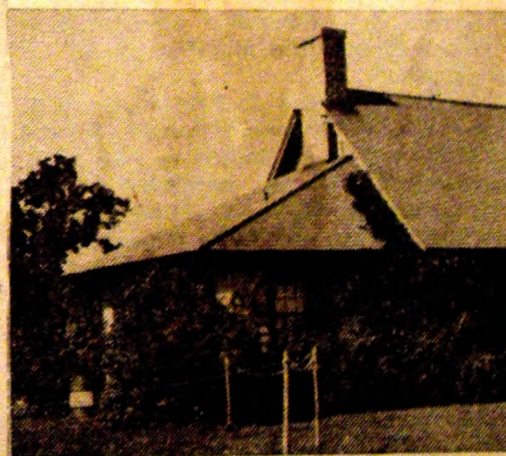
Other Township Officials not present in pictures—Frank Weber, Constable; Frank L. Smith, School Treasurer; Sam Rhode, Thistle Commissioner.

Group of Local Boys



Picture shows a group of forty-one Pioneer Hybrid seed corn fields in the Burger farm, owned by Edw. McWiliam of Mr. Carl Linn, Mr. Joe Cassidy of the Dwight High School. All was uncut in this territory.

DWIGHT COUNTRY



Formally opened to the membership building is situated on a knoll near the clubhouse. It has a large main room which has a fireplace. The entire south side is an enclosed porch with a view of the country. The Dwight Country Club was organized ten years ago, and from a small organization has grown to a large membership. The attractive grounds are for the devotees of golf, during the summer months. Activities have taken place at the clubhouse as well as tournaments, both local and international. Hans P. Rosendall is the President.

CU
sen
are
Leo
Rol
the
Pie
Por
the

Ruth
Nur
At

M
ate
Sch
rec
me
sch
Ho
Ma
th
Ma
and Mrs.
Route 1, C
P
nu
st
r
h
i
a
P
C

E
v
1
u
P
a
th
by
of
C