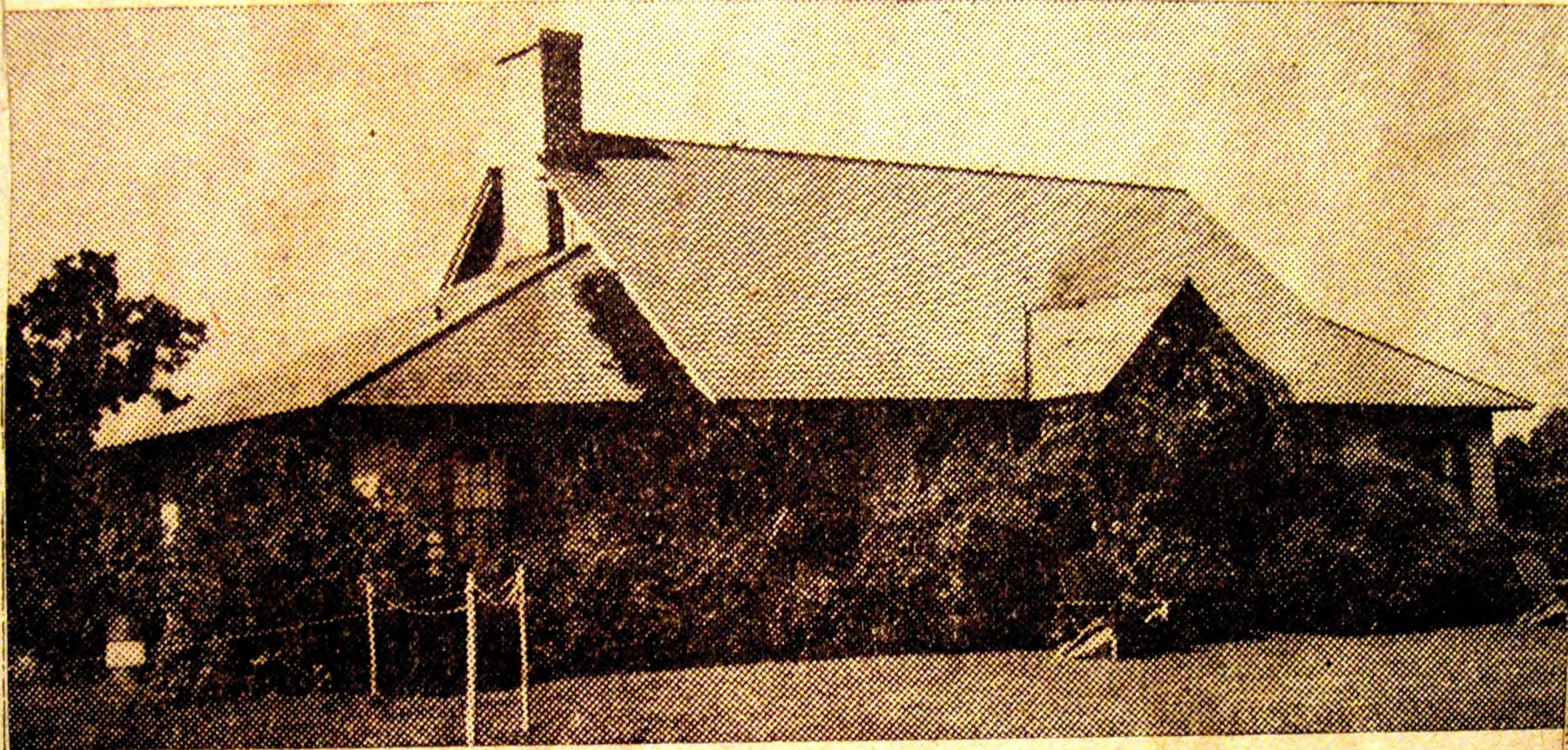


DWIGHT COUNTRY CLUB HOUSE



hen, Road

Formally opened to the membership on September 22, 1924. The building is situated on a knoll near the creek and faces the north. There is a large main room which has a fireplace on the east side. Along the entire south side is an enclosed porch which opens from the main room.

The Dwight Country Club was organized approximately twenty-some years ago, and from a small organization has grown to a large substantial membership. The attractive grounds afford many pleasant hours for the devotees of golf, during the summer months, and many social activities have taken place at the club house during past years, as well as tournaments, both local and inter-city, on the golf grounds.

Hans P. Rosendall is the President this year of the Club.



SOUTH END O